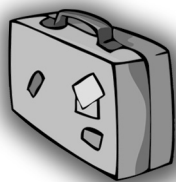




The Mystery at

Cape Cod



Teacher's Guide

by
Carole Marsh

Editorial Assistant: Sherri Smith Brown • Art & Design: Randolyn Friedlander

©2010 Carole Marsh/Gallopade International/Peachtree City, GA

Permission is hereby granted to the individual purchaser or classroom teacher to reproduce worksheets, quizzes, and activity pages (only) for individual or classroom use only.

Reproduction of these materials for an entire school or school system is strictly prohibited.

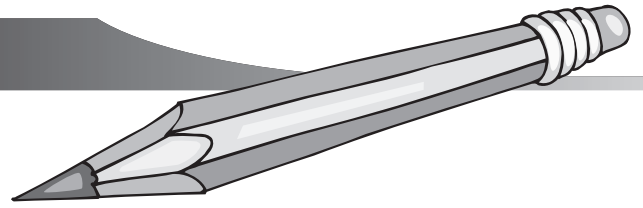
No part of this book may be stored in a retrieval system, or transmitted in any form or by any means without written permission from the publisher.



GALLOPADE
INTERNATIONAL



A Word from the Author



Dear Teacher,

In 1979, I began writing children’s mysteries set at historic sites that still existed—primarily so that kids could go and see what they had read about. Frankly, I found no more fun, educational, and stress-free (actually, just plain joyful!) activity to do with my then school-age children than to visit a fascinating historic site!

Cape Cod is such a place! It is one of America’s most historic and beautiful landscapes. The Pilgrims landed in what is now Provincetown before sailing across the bay to Plymouth. Sandwich is one of the nation’s oldest towns. Since its earliest days, Cape Cod’s history has been intertwined with fishing and sailing. Lighthouses dot the rugged coastline of the Cape, standing watch over the many sailors and fishermen who have returned from stormy seas to the weathered cottages along its shores. Even the name, Cape Cod, pays homage to the abundant codfish that flourish in its waters. And once you have seen it, how can you forget the huge humpback whales that sing their mournful songs far offshore!



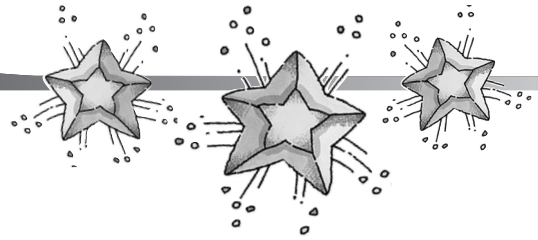
I have walked along the beaches of the Cape Cod National Seashore with its towering dunes and abundant wildlife. This is a place where you can enjoy the beach, the ocean, and the food that comes from it! Sip some steaming New England clam chowder, dig your own clams from the cape’s muddy flats, or stir the pot at a clambake on the beach. These are all experiences authentic to Cape Cod.

One of the things I like most about writing these kinds of mysteries is helping kids and adults learn together. Reading and going and seeing and doing is what education is all about! And sometimes, “adopting” a subject or place leads to a lifelong interest in an era, a place, or a people.

Enjoy your Cape Cod experience!

Carole Marsh

Table of Contents



Page-by-Page Guide	4
Page-by-Page Guide	5
Page-by-Page Guide	6
Page-by-Page Guide	7
Page-by-Page Guide	8
Page-by-Page Guide	9
Page-by-Page Guide	10
Page-by-Page Guide	11
Page-by-Page Guide	12
Discussion Questions	13
Geography: Find It!	14
Mathematics: Calculate It!	15
English: Write It!	16
Vocabulary: Use It!	17
Art: Create It!	18
Science: Cook It!	19
Cape Cod National Seashore	20
Word Search	21
Chapters 1-4 Worksheet	22
Chapters 5-8 Worksheet	23
Chapters 9-11 Worksheet	24
Chapters 12-15 Worksheet	25
Chapters 16-19 Worksheet	26
Chapters 20-23 Worksheet	27
Vocabulary End-of-Unit Quiz	28
Character Matching End-of-Unit Quiz	29
Fill-in-the-Blank End-of-Unit Quiz	30
True or False End-of-Unit Quiz	31
Answer Key	32

Page-by-Page Guide

Page #	Subject	<u>EXPLORE!</u>
11	Geography	Cape Cod is a large peninsula extending 60 miles into the Atlantic ocean from the coast of Massachusetts. It forms a wide curve enclosing Cape Cod Bay.
12	Vocabulary	A peninsula is a piece of land that juts out into the water but is connected to the mainland by a strip of land called an isthmus. Do you know of any other peninsulas?
13	Vocabulary	Something is weathered when its appearance has been changed or worn away by a long exposure to the elements. Wooden houses in Cape Cod have been weathered by rain, wind, and cold.
13	Towns	Provincetown is a well-known resort and artists' community at the northern tip of Cape Cod.
14	Agriculture	Cranberries are small, red, acid berries used in cooking. They grow in bogs—wet, muddy ground that is too soft to support anything heavy. So many cranberries grow in Cape Cod that the cranberry is the state berry of Massachusetts!
14	Towns	Originally home to the Nauset Indians, Eastham was settled in 1651 by a group of Pilgrims dissatisfied with Plymouth. Eastham is known for shellfish and agriculture, and as a summer resort.
16	Weather	Papa cannot land the <i>Mystery Girl</i> in Provincetown because a nor'easter is expected. Read what is said about a nor'easter on page 16. Why would you not want to keep a plane on Cape Cod during such a violent storm?
18	Vocabulary	Arabella maneuvered the car through the heavy Boston traffic. That means she drove it skillfully and carefully.
19	Feelings	The kids are excited to think they might see a whale from the restaurant window; but when none appears, Grant is dejected. That means he is very disappointed. Have you ever been excited about something and then dejected when nothing happened?

Page-by-Page Guide

- 19 Industry Whaling is the industry of hunting and killing whales for their oil, meat, or bones.
- 21 Fish The Atlantic codfish is so abundant in the waters around Cape Cod that it has been named the state fish.
- 21 Industry Fishing has always been a big industry in Cape Cod, but the government has placed a lot of regulations on fishing because waters have been overfished and stocks of fish are decreasing. Fishing boats must go out 100 miles into the ocean to catch their fill. Today, tourist dollars are becoming more important than fishing to the economy of many Cape Cod towns.
- 22 Vocabulary A bed and breakfast is a guesthouse that provides guests with a room for the night and a morning meal.
- 23 Natural Feature A sand dune is a mound or ridge of sand formed by the wind. They are found in the desert or on the seacoast, like at Cape Cod.
- 26 Landmark The Pilgrim Monument in Provincetown commemorates the history of the Mayflower Pilgrims and their stay in Provincetown Harbor. It is the tallest all-granite structure in the United States.
- 27 Landmark In the early 1900s, engineers dug out the isthmus of Cape Cod to build the Cape Cod Canal so boats and ships could pass through rather than go around the dangerous cape. This unofficially turned Cape Cod into an island! Do you know of any other famous canals?
- 27 Industry Sandwich is known for its pressed glass, a form of glass made by pressing molten, or very hot, glass into a mold. Pressed glass was invented in 1825 to make knobs for furniture, but developed into an inexpensive way to mass-produce glassware.
- 28 Craftspeople Glassblowing is the craft of making glassware by blowing through a tube of molten glass. A person who blows glass is called a glassblower. Do you know any glassblowers?
- 30 Vocabulary Erosion is the process of eroding, or gradually wearing away, by wind, water, or other natural agents.

Page-by-Page Guide

- 30 Vocabulary Because of erosion, many scientists believe that thousands of years from now, Cape Cod will be submerged by the sea. What does submerge mean?
- 30 Feelings Grant is alarmed about the idea that Cape Cod will disappear some day. That means he is fearful or frightened. Have you ever been alarmed by the idea that something might happen?
- 31 National Seashore The Cape Cod National Seashore protects miles of sandy shoreline and thousands of acres of dunes, marshes, and ponds on Cape Cod. President John F. Kennedy, who had grown up in Hyannisport on Cape Cod, established the National Seashore in 1961 to protect Cape Cod from further development.
- 31 Vocabulary To illuminate something means to supply it with light. The dunes were illuminated by the soft, silvery moonlight.
- 32 Writer Henry David Thoreau was an America author and poet born in Concord, Massachusetts. In the mid-19th century, he walked the Cape Cod coastline and wrote about his adventures in his book “Cape Cod.” Today, you would have to wear scuba gear to follow the path that Thoreau walked. Cape Cod’s Outer Beach erodes at an average rate of about 3 feet per year.
- 33 Feelings When Mimi admitted she had been a dune dweller when she was young, everyone except Papa was awestruck. What does awestruck mean? Why do you think they felt that way?
- 35 Architecture Christina’s room was separated from the rest of Ben and Arabella’s cottage by a breezeway. A breezeway is a roofed outdoor passage.
- 37 Occupations Mrs. Winthrop worked at the lighthouse as a tour guide. In olden times, a lighthouse keeper was responsible for taking care of a lighthouse, particularly its lamp or lens. Keepers lived at the lighthouse so they could trim the wicks of the lamps, replenish fuel, wind the clockworks, and clean windows and lenses. Now, most things are automated, and no keeper is needed.

Page-by-Page Guide

- 39 Shellfishing Grant says low tide is the best time for clamming. What is low tide and why would it be the best time for clamming?
- 40 Behavior Quincy is being mischievous when he says they will let his mother wash the clams. What is meant by being mischievous?
- 41 Food A clambake is an outdoor social gathering at which clams and other seafood and foods are baked or steamed in a pit, over heated stones, and under a bed of seaweed. Have you ever been to a clambake? What were some of the foods that were cooked?
- 45 Vocabulary The kids met Mimi and Papa at the trailhead of the Nauset Marsh Trail. What is a trailhead?
- 46 Natural Science Numerous plants and wildlife live in the Nauset Marsh. Plants include cord grass, reeds, pickleweed, widgeon grass, and cattails. Wildlife includes river otters, osprey, and cormorants.
- 46 Vocabulary Christina says that marshes provide food, water, shelter, and habitat for all kinds of wildlife. What is a habitat?
- 47 Vocabulary Plankton are the organisms that drift or float in the sea or in fresh water. What does Papa mean by “microscopic” plankton?
- 47 Vocabulary A nutrient is a substance that provides nourishment essential for growth and the maintenance of life. Marshes provide nutrients for the sea life and plants that live there. Where do people get their nutrients?
- 48 Vocabulary Crustaceans are a large group of mainly aquatic arthropods. They usually have four or more pairs of limbs and several other appendages. Name some crustaceans.
- 50 Occupations Marine biology is the scientific study of organisms in the ocean or other marine or brackish bodies of water, such as estuaries and marshes. Who is a marine biologist in the story?
- 50 Science The Salt Pond Visitor Center at Cape Cod National Seashore has natural history exhibits. Those are exhibits about plants and animals. Have you ever seen a natural history exhibit? Where?

Page-by-Page Guide

- 51 Vocabulary To be engrossed means to pay full attention to someone or something. What were the kids engrossed in at the visitor center?
- 51 Vocabulary What does it mean if something is impermeable?
- 53 Technology Grant said he would not get lost on the bike trail because he had his GPS. What does GPS stand for and how do you use it?
- 54 Vocabulary Why do you think Grant and Christina knew the meaning of the term red herring but Quincy was not familiar with it?
- 55 History The Old Harbor Life Saving Station is one of the original 13 life-saving stations built on the Cape Cod coastline. They were manned and equipped for rescuing survivors from wrecked sailing ships. Old Harbor was moved from Nauset Beach to its location at Race Point Beach in 1977 after shoreline erosion threatened it.
- 56 Plants Nearly 800 species of plants live on the Cape Cod National Seashore. There are plants typical of dunes, marshes, woodlands, grasslands and other seashore landscapes. Amelia’s dune plants might have included beach heather, beach grass, and sand sedge.
- 56 Vocabulary Ben tries to console Amelia when she tells him the dune plants she has been studying are gone. What does it mean to console someone? Have you ever tried to console a friend?
- 59 Food Clam chowder is a rich soup containing clams, diced potatoes and onions. In Cape Cod, you probably would eat New England clam chowder, which has a milk or cream base. Have you eaten clam chowder? How did you like it?
- 60 Vocabulary Christina gestured to Grant and Quincy to stop dancing. A gesture is a movement of the body, especially the head or hand, to express an idea or meaning. What type of gesture do you think Christina made to the boys?
- 61 Figure of Speech What do you think Christina meant when she said “circle the wagons” to the kids? Where do you think this expression comes from?

Page-by-Page Guide

- 61 Emotions Many gestures we make show our emotions. What emotion was Amelia showing when she was wringing her hands? What are some other gestures people make to show their emotions?
- 62 Vocabulary Ranger Burnside asked the kids a question curtly? What does it mean to be curt? What is the opposite of curt?
- 63 Vocabulary When you say something “in unison,” how do you say it?
- 63 Vocabulary Disobedient means neglecting or refusing to obey. Do you think the kids were being disobedient?
- 65 Weather Ben and Arabella were boarding up their cottage in anticipation of the storm. What does this mean?
- 66 Vocabulary Grant was so excited about the approaching storm that he was oblivious to other things that were going on. What does it mean to be oblivious? Is it a good or bad thing? Why?
- 68 Vocabulary Christina was pleading with Mimi to let her and Grant stay with Amelia and Quincy while Mimi and Papa went to Truro. What does plead mean? How did she plead?
- 69 Emotions When they argue about paying the bills, Arabella tells Ben he is “stressed out” all the time. What does it mean to be stressed out. What has caused Ben to be stressed?
- 71 Vocabulary Amelia and Christina dragged Amelia’s little skiff to the Winthrop’s back deck. What were they dragging?
- 75 Industry Cape Cod Potato Chips have been made in Hyannis since 1980. You can tour the Cape Cod Potato Chip Factory to see how the crunchy chips are made. It’s one of Cape Cod’s biggest tourist attractions. Has anyone eaten Cape Cod Potato Chips?
- 76 Vocabulary Christina saw bobbing whitecaps on the Atlantic Ocean. Whitecaps are small waves with white, foamy crests.

Page-by-Page Guide

- 78 History When oil lamps were used in lighthouses, a small building was built nearby to store the oil. The oil house at Nauset Light was moved away from the eroding cliffs along with the lighthouse in 1996. It is now used to house exhibits telling the story of erosion, the relocation, and the lighthouse keepers and their families.
- 80 Architecture A spiral staircase constantly turns in one direction around a solid or open center. The Nauset lighthouse has 44 steps that turn around an open center.
- 81 Vocabulary Mrs. Winthrop carried a lantern from the lighthouse during the clambake. A lantern is a lamp with a transparent case protecting the flame or electric bulb, and usually has a handle by which it can be carried or hung. Lantern is also the name of the light chamber at the top of a lighthouse.
- 83 Plants Seaweed is a large alga, a simple non-flowering plant. It grows in the sea or on rocks below the high-water mark.
- 83 Vocabulary A concoction is a mixture of various ingredients or elements. A clambake is a concoction of seafood and vegetables. What else could be described as a concoction?
- 85 Figure of Speech Christina says she “can’t put two and two together” on this mystery. What does she mean by that?
- 88 History The original Three Sisters Lighthouses were built on Nauset Beach in 1837. They were placed 150 feet apart in a straight line to distinguish them from the single light in North Truro and the double lights at Chatham. Over the years they have been rebuilt, moved back from the cliffs, and relocated. Today, they are inactive and stand about 1/3 mile behind the Nauset Light.
- 93 Emotion Grant’s voice quivers when Christina says they need to creep closer to the shoveling noise. What does it mean for your voice to quiver? What emotion does a quivering voice indicate?
- 94 Figure of Speech The shoveling noise is so close that it makes the hair stand up on the back of Christina’s neck. What does this figure of speech mean?

Page-by-Page Guide

- 95 Vocabulary A cubbyhole is a small, enclosed compartment or room.
- 97 Vocabulary The kids hear the low boom of a foghorn as they huddle in the cubbyhole. A foghorn's loud, deep sound is a warning to ships in fog. Have you ever heard a foghorn? Where were you?
- 99 Vocabulary The kids careened down the path. What does that mean?
- 101 Towns Barnstable is one of the oldest towns on Cape Cod. Fishing has been one of its major industries, and at one time nearly 800 vessels were harbored in the town. Today, it is a popular tourist town.
- 101 Nature Papa and Mimi are taking the kids whale watching. Whale watching is when you go out on a boat to observe whales in their natural habitat. Have you ever gone whale watching? If so, what was it like? What other animals might you watch?
- 102 Emotions Christina has always wanted to go whale watching, but she is still so upset from the scare in the lighthouse that she is not excited. She has a conflict of emotions. Have you ever had a conflict of emotions? How did you get through it?
- 104 Literature *Moby-Dick* was written by American author Herman Melville in 1851. It tells the story of a sailor named Ishmael and his voyage on a whale ship commanded by Captain Ahab. Ahab's sole purpose is to find and kill the great white whale Moby-Dick, which destroyed his boat and bit off his leg on an earlier voyage.
- 104 Vocabulary Destiny is the hidden power believed to control what will happen to a person in the future.
- 105 Boating
Terms Amelia knows her boating terms but Grant does not and becomes confused. The bow is the front end of a boat or ship; the stern is the rear-most part. When you are facing forward, the starboard is on your right and the port is on the left.
- 108 Vocabulary When a whale lifts two-thirds or more of its body out of the water and splashes down on its back, the whale is breaching.

Page-by-Page Guide

- 111 Vocabulary Mimi, Papa, and the kids go shelling—walking along the beach gathering seashells. People who search beaches for shells or other interesting items are sometimes called beachcombers. What kind of shells did they find at Cape Cod?
- 113 History The *Titanic* was a British luxury cruise liner. The largest ship in the world at that time and said to be unsinkable, it struck an iceberg in the North Atlantic Ocean on its maiden voyage in 1912 and sank. Almost 1,500 people died.
- 114 Vocabulary A mollusk is a general group of marine invertebrates—meaning they have no backbone. Name some mollusks.
- 115 Plants Grant teasingly tells Mimi that he ate seaweed at the clambake. Actually, seaweed has a lot of nutrients and is eaten regularly in many cultures. More and more people in the United States are eating seaweed in soups, salads, side dishes, and as a sushi wrapper.
- 117 Vocabulary To saunter means to walk in a slow, relaxed manner.
- 119 Vocabulary Mimi is reluctant to allow the kids to go to the lighthouse with a storm on its way. What does reluctant mean?
- 120 Birds The kids see a few seagulls and cranes on the shore as the storm approaches. About 370 species of birds live at Cape Cod National Seashore, including great blue herons, common terns, piping plovers, hawks, and swallows.
- 122 Vocabulary Incredulous means unable to believe something. Christina is incredulous that someone is stealing and bagging sand.
- 123 Weather When rain pelts down, it falls quickly and very heavily.
- 126 Weather Hurricane force winds are winds that exceed 75 miles per hour.
- 131 Vocabulary Christina retraced her steps to find the sandy footprints. What does that mean?

Discussion Questions

1. Papa, Mimi, Christina and Grant arrive in Cape Cod just as a nor'easter is brewing in the Atlantic Ocean. What role does the nor'easter play in the story? How does it change their plans? How does it affect Christina's ability to solve the mystery of the disappearing sand?
2. Discuss the process of erosion. How does erosion—both man made and natural—affect Cape Cod?
3. Mimi admits she lived in a dune shack when she was younger. Describe what you think it would be like to live on the dunes.
4. Discuss all the things you learned about the Cape Cod National Seashore, including its history, plants, animals, and marine life.
5. Much of the action of the mystery takes place at the Nauset Lighthouse and the Three Sisters Lighthouses. Lighthouses are an important part of the history of the coastal United States. What would it have been like to be a lighthouse keeper 200 years ago? What were the keeper's duties and what would living at the lighthouse be like for the keeper's family?
6. How do you feel about Ben? What were his good qualities? What were his bad qualities? Did you ever suspect him of stealing the sand?

Bonus Info!

"Old Cape Cod"

This popular song, written by Claire Rothrock Graham and recorded in 1957 by singer Patti Page, has become the unofficial song of Cape Cod.

If you're fond of sand
dunes and salty air,
quaint little villages here
and there,
you're sure to fall in love
with Old Cape Cod.

If you like the taste of a
lobster stew
served by a window with
an ocean view,
you're sure to fall in love
with Old Cape Cod.

Winding roads that seem
to beckon you
Miles of green beneath the
skies of blue
Church bells chimin' on a
Sunday morn
remind you of the town
where you were born.

If you spend an evening,
you'll want to stay,
watching the moonlight on
Old Cape Cod bay.
You're sure to fall in love
with Old Cape Cod.

Geography: Find It!

1. Find Massachusetts on a map of the United States. Now, find Cape Cod. Find your location on the map. Plan a trip to Cape Cod. How will you get there? Use a highlighter to trace your journey. How many miles will you have to travel?
2. Cape Cod is a peninsula. How many other peninsulas, or capes, do you see on your map of the United States? List them.
3. Look at the relationship between England and Cape Cod on a globe of the world. In 1620, the Pilgrims journeyed from Plymouth, England, to what is now Plymouth, Massachusetts, on Cape Cod. The trip took 66 days. Now, use string to mark off a rectangle 90 feet x 25 feet. Pretend this is the deck of the Mayflower. Have the entire class stand within the rectangle. Discuss what it would be like to travel across the Atlantic Ocean in a wooden sailing ship with about 130 people in this space for more than two months!
4. Find a map of Massachusetts and use it as a guide to draw a map of Cape Cod. Using your book and the Internet, find all the locations that Christina and Grant visited—from Boston to Provincetown—and add them to your map. Use icons to indicate the location of any landmarks, such as Plymouth Rock and lighthouses.
5. If you were to visit Cape Cod, what places would you most like to visit? Why did you choose those places?

Bonus Info!

Cape Cod Lighthouses

- **Nobska Light**
Built in 1828 and replaced in 1879, it protected sailors in Buzzards Bay.
- **Sandy Neck Light**
Built in 1826 and rebuilt in 1857, its lantern room has now been removed.
- **Chatham Light**
Built in 1881, this was a lard-burning light.
- **Nauset Light**
Before 1923, three towers called the Three Sisters stood here. They are on display about 100 yards from the present red and white tower.
- **Cape Cod Light**
Built in 1797, this was the Cape's first lighthouse. It warned sailors of an area known as the "Graveyard of Ships." It is the most powerful light in New England.
- **Race Point**
This 40-foot beacon, built in 1816, helped guide ships around tricky shoals before the Cape Cod Canal was built.
- **Wood End Light & Long Point Light**
Wood End Light, built in 1872, is an exact replica of Long Point Light, built in 1822.

Mathematics: Calculate It!

1. On their shelling trip to the beach, Mimi found 5 scallop shells, 1 whelk, and 3 clamshells. Papa found 2 whelk shells. Christina found 4 starfish. Grant found 6 scallop shells and 10 clamshells, and 1 starfish. How many shells of each kind did they take back home? Make a graph to show your results. Color it and place a picture or drawing of each type of seashell on the bar line.
2. To figure the square footage of something, multiply the length times the width. If the deck of the Mayflower is 90 feet long and 25 feet wide, what is the square footage?
3. Ben's note to himself said to make 100 bags of sand tonight. If he sold his bags for \$4.00 each, how much money did he make? If he needed \$2,000 to pay his bills, how many more bags of sand does he need?
4. Mrs. Winthrop needed one lobster, six clams, four mussels, one ear of corn, and one potato for each of the five people she was cooking for. How many food items did she put into the clambake pit?
5. For her plant study, Amelia was studying 10 cattails, 14 cord grass plants, 5 reeds, and 1 pickleweed. When she came to check on her plants, half of them were gone. How many were left?
6. When the kids went clamming, Quincy dug 20 clams, Grant dug 12, Amelia dug 18, and Christina dug 7. How many clams did they take to Mrs. Winthrop?

Bonus Info!

Cape Cod by the Numbers

Cape Cod is a 413-square mile peninsula of fields, forests, dunes, marshland, and beaches located off the Massachusetts coast.

The Cape's northern shoreline stretches along Cape Cod Bay. Nantucket Sound borders its southern coast. Stretching 35 miles eastward, Cape Cod suddenly turns north at the "elbow" and extends another 30 miles further into the Atlantic Ocean.

Cape Cod has 15 towns and 1 county, Barnstable.

Cape Cod's oldest town is Sandwich (1637). The last town to be established is Bourne (1884).

Cape Cod's year-round population is about 200,000 people.

Two bridges cross the Cape Cod Canal, Bourne Bridge and Sagamore Bridge.

The Cape Cod Canal is 17.5 miles long.

At 252 feet tall, Pilgrim Monument in Provincetown is the Cape's tallest structure. It is also the tallest all-granite structure in America.

1. Write a book report on *The Mystery at Cape Cod* and include the following information. What is the setting? Who are the main characters? What is the plot? What is the climax of the story? Is there a theme or a main idea that the author is trying to get across? What do you think it might be? What is your favorite scene? Did you like the book? Why or why not?
2. Who is your favorite character in the book? Write a paragraph describing that character (physical description and character traits). What are his/her strengths and weaknesses? How is the character important to the plot of the story?
3. Pretend you are traveling through Cape Cod. Write a travelogue about your adventures.
4. On the Internet or in a book, find a picture of a Cape Cod lighthouse that you like. Print it or copy it. Then, pretend you are the child of a lighthouse keeper in 1820 at that lighthouse. Choose a day of the year and write a diary entry describing what your day is like. When you are finished, make a poster with the photo and your diary entry.
5. Pretend you are a reporter taking a whale watching cruise. Write a news story about your trip. Be sure to include journalism's Five W's (Who, What, When, Where, Why—and sometimes How) when writing your article.

Bonus Info!

Elements of a Story

Every story has to have several essential elements:

Setting—where and when the story takes place

Characters—the people in the story

Exposition—background information on characters and setting explained at the beginning of the story

Plot—all the major events and action in the story

Conflict—the problem faced by the characters

Climax—when the conflict of the plot is resolved

Resolution—the end of the story

Theme—a general idea or “universal truth” that is derived from the story

Art: Create It!

1. Draw a picture of your favorite character in the mystery! If you want, you can draw them in your favorite scene in the story.
2. Besides Nauset and the Three Sisters, there are numerous lighthouses on Cape Cod. Use a book or the Internet to find photos of Cape Cod lighthouses. Choose one and draw a picture of it. Color it with crayons or markers. If you have been to another lighthouse anywhere else in the United States, you might want to find a picture of that lighthouse and draw a picture of it too.
3. Discuss the different types of whales (humpback, killer whale, beluga, etc.) and the whaling industry. Choose one type of whale. Find a picture of your whale in a book or on the Internet. Draw it, and write a short paragraph about its characteristics. Go on the Internet and find a recording of the whale's "song" and play it for the class.
4. Draw your favorite scene from *The Mystery at Cape Cod*. Discuss that scene in front of the class and explain why that was your favorite scene. (A variation of this is to go through the book and select one scene for each person in the class to draw. When they are finished with the drawings, let the students tell the story of *The Mystery at Cape Cod* by discussing the drawings, or "scenes" in order.)

Bonus Info!

Lighthouse Art

Nauset Light is white and red with a black lantern room. How will you paint your lighthouse? Here are some things to know about lighthouse color and pattern.

For many years, lighthouses were the main way sailors and fishermen found their way to shore. During the day, they looked for the lighthouse's daymark. At night, they looked for its flash.

The **daymark** is the pattern or color of the lighthouse. White paint helps it stand out against the trees and sky. Some towers are all white. Some have alternating stripes of white and black or of white and red. On some, the stripe has a spiral pattern like a barber pole.

The flashes of light from each lighthouse in an area are also different. Each light has its own pattern, called its **characteristic**. One light may flash slowly, another quickly, another in groups of two or three flashes with a pause in between, another with a red or green light flashing after the white light.

Science: Cook It!

“C” is for cranberries! Indians introduced cranberries to the Pilgrims in the early 1600s. Today, cranberries are one of Cape Cod’s biggest industries.

Cranberry Bog

Ingredients

1-1/2 cups of cranberries
1/4 cup brown sugar
1/4 cup walnuts
one egg
1/2 cup granulated sugar
1/2 cup all-purpose flour
1/3 cup melted butter

This pudding-like dish can be prepared in a toaster oven. Simply spread cranberries in a buttered pie plate. Sprinkle with brown sugar and chopped walnuts. Beat one egg and slowly add the granulated sugar. Add the flour and melted butter. Pour over the cranberries and bake about 45 minutes at 325°F until firm. Cut and serve with vanilla ice cream!

Cathy’s Cranberry Butter

Blend 1/3 pound cranberries, either fresh or frozen, in a blender. Add 1-1/2 cups confectioner’s sugar, 1 stick of butter, and 1 tablespoon lemon juice. Blend on high speed until smooth. Chill and serve on hot biscuits or muffins!

Bonus Info!

Cape Cod Clam Chowder

If you lived on Cape Cod, you could dig up a few clams and make this hearty soup anytime!

Ingredients

8 lbs quahog clams
1/4 lb bacon, diced
2 1/2 cups chopped onion
2 cups clam juice
2 large potatoes, diced
3 cups heavy whipping cream
Kosher salt
Freshly ground black pepper

Place clams in roasting pans. Bake at 350° for 8 minutes or until slightly opened. Shuck clams; release meat from shells, discarding any that remain closed. Set clams aside. Strain broth and reserve.

Cook bacon in a Dutch oven until crisp; remove bacon and drain on paper towels, reserving 2 tablespoons drippings in pan. Add onion and cook 5 minutes or until translucent. Stir in clam juice. Add potatoes and cook 5 minutes, stirring occasionally. Stir in reserved broth; cook over low heat 25 minutes. Stir in cream and simmer 25 minutes or until potatoes are tender. Add clams; cook 5 minutes or until thoroughly heated. Add salt and pepper to taste.

Makes 6 servings.

Cape Cod National Seashore

Make a diorama and a bulletin board display of the Cape Cod National Seashore showing plant and wildlife diversity.

1. On the Internet, find photos and a map of the national seashore. Make a diorama of the landforms of the park—cliffs, sand dunes, seashore, ocean. You might use papier maché or construction paper to make sand dunes and rocks. Color the ocean with paint or markers. Cover the dunes and seashore with sand.
2. Use the book and the Internet to make a list of plants, fish, shellfish, birds, and other animals that live on the seashore or in the ocean.
3. Discuss the weather at the national seashore. How does the weather affect the plants and animals that live there? How does the weather affect the tourists that visit?
4. Listen to the sounds of the seashore. Using the Internet, find a recording of waves on the shore, different shore birds, such as seagulls, and the song of the humpback whale. Play these to the class as they work on their dioramas.
5. Have each class member choose at least one thing from their list and draw a large-sized picture of it on construction paper. Color it appropriately, cut it out, and pin or paste it to a Cape Cod National Seashore bulletin board display near the diorama.
6. Write a paragraph about that particular plant, shellfish, bird or animal. Discuss its habitat, what it eats, how it grows, and why it makes its home on the seashore.
7. Each person should read his/her paragraph to the class, and then attach the paragraph to the bulletin board display next to the item it represents.
8. Have each student make a clay model of the plant, fish, or animal that he/she has chosen and place it in its habitat on the diorama.

Activities

Search for the mysteriously hidden words below!

E	S	Q	X	Z	C	J	X	S	U	I	X	S	G	D
A	O	T	R	J	C	R	Y	X	I	H	H	G	R	U
L	I	G	H	T	H	O	U	S	E	E	I	E	H	N
E	K	A	B	M	A	L	C	S	L	D	T	E	C	E
R	T	N	P	S	Q	H	T	L	T	S	L	L	L	S
P	W	A	E	O	O	G	F	T	B	A	A	S	L	H
C	I	R	T	W	Y	I	S	O	H	M	C	Y	U	A
A	R	L	D	I	S	Z	L	W	L	G	L	E	G	C
P	M	E	G	H	B	M	O	L	L	U	S	K	A	K
E	R	M	P	R	G	A	N	O	I	S	O	R	E	N
C	O	M	G	E	I	P	H	S	K	I	F	F	S	D
O	T	T	A	C	E	M	P	U	T	X	E	L	S	U
D	S	K	X	R	Y	K	M	O	D	F	B	A	J	N
W	I	T	A	Q	S	A	Z	S	U	C	K	O	A	E
F	T	V	Q	K	I	H	W	R	G	B	D	S	A	R

WORD BANK

CAPE COD
CHOWDER
CLAM
CLAMBAKE
CRUSTACEAN

DUNE
DUNE SHACK
EROSION
HABITAT
KEEPER

LIGHTHOUSE
LOBSTER
MARSH
MOLLUSK
PILGRIM

SEAGULL
SHELLFISH
SKIFF
STORM
WHALE

Chapters 1-4 Worksheet

NAME: _____

DATE: _____

Do you know what these words mean? Write their definitions in the space provided.

1. maneuver
2. erosion
3. submerge
4. illuminate

Answer the following questions using complete sentences.

5. What did Grant see from the airplane that looked like a huge bowl of cherries?
6. What type of weather was expected in Cape Cod?
7. What ship did the kids see from the restaurant window in Boston?
8. What was the first historical site that Arabella stopped at on the way to Cape Cod?

Write T for True and F for False.

9. ____ Cape Cod is shaped like a giant bent arm.
10. ____ Dune dwellers are people who live in caves in the mountains.

Chapters 5-8 Worksheet

NAME: _____

DATE: _____

Do you know what these words mean? Write their definitions in the space provided.

1. habitat
2. crustacean
3. engrossed
4. impermeable

Answer the following questions using complete sentences.

5. What did the kids find at the base of the dune near Amelia and Quincy's house?
6. What did Mrs. Winthrop ask the kids to do for her to prepare for the clambake?
7. What creature did Grant imitate as they walked along the Nauset Marsh Trail?
8. What kind of wildlife can you find in the marshes at Cape Cod?

Write T for True and F for False.

9. ____ Ben told the kids the track in the sand was probably from a motorcycle.
10. ____ Grant stepped on an empty crab shell with a clue written on it.

Chapters 9-11 Worksheet

NAME: _____

DATE: _____

Do you know what these words mean? Write their definitions in the space provided.

1. red herring
2. console
3. curtly
4. disobedient
5. oblivious

Answer the following questions using complete sentences.

6. What was missing from the sand dune near the old life-saving station?
7. Where did Papa and Mimi decide to go before the storm came?
8. What does Christina hear Arabella and Ben arguing about?

Write T for True and F for False.

9. ____ Everyone is boarding up because a nor'easter is approaching Cape Cod.
10. ____ A nor'easter is a tornado.

Chapters 12-15 Worksheet

NAME: _____

DATE: _____

Do you know what these words mean? Write their definitions in the space provided.

1. skiff
2. whitecaps
3. lantern
4. concoction

Answer the following questions using complete sentences.

5. What clue does Christina find while the kids are building a sandcastle?
6. Why was Nauset Lighthouse moved away from the cliffs on the beach?
7. What does Mrs. Winthrop put into the clambake that startles Grant?
8. What are the Three Sisters?

Write T for True and F for False.

9. ____ Mrs. Winthrop, Amelia, and Quincy live in the lightkeeper's house.
10. ____ Christina stumbles over a red-handled ax at the dunes near the Three Sisters.

Chapters 16-19 Worksheet

NAME: _____

DATE: _____

Do you know what these words mean? Write their definitions in the space provided.

1. drench
2. cubbyhole
3. careened
4. mollusk

Answer the following questions using complete sentences.

5. What does it sound like someone is doing at the dunes near the Three Sisters?
6. What can't Amelia find at the lighthouse?
7. What splashes icy cold seawater all over Grant?
8. Where does Christina tell the kids they are going to have to go to solve the mystery?

Write T for True and F for False.

9. ____ The kids realize Ranger Burnside is sitting in a sand chair on the beach listening to them talk.
10. ____ Christina agrees with Captain Ahab that the whale is a symbol of evil.

Chapters 20-23 Worksheet

NAME: _____

DATE: _____

Do you know what these words mean? Write their definitions in the space provided.

1. reluctant
2. incredulous

Answer the following questions using complete sentences.

3. What are some of the birds that live at Cape Cod?
4. What besides potholes did the kids find when they went back to the dunes?
5. What did Grant think the blue bags with orange labels looked like?
6. What does Christina type on the To Do List application on her cell phone?
7. What does Grant find in the bushes alongside Arabella's house?

Write T for True and F for False.

8. ____ The kids walked into the dune shack and inspected the bags of sand.
9. ____ Ben says that Christina and Grant are good detectives and good friends.
10. ____ Mimi told Christina that everything always turns out OK as long as we keep searching for the truth.



The Mystery at Cape Cod



Vocabulary End-of-Unit Quiz

NAME: _____

DATE: _____

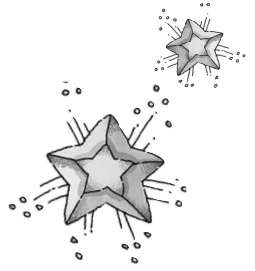
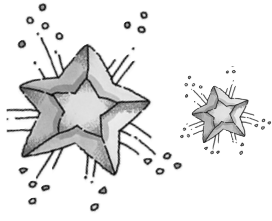
Using the word bank, fill in the correct vocabulary word in the sentences below.

WORD BANK

crustaceans	disobedient	illuminated	skiff	submerge
incredulous	mollusks	habitat	erosion	impermeable

1. Ranger Burnside said that children who played on the dunes were being _____ .
2. Cranberries grow on vines in _____ bogs that are layered with sand, peat, gravel, and clay.
3. Lobsters and crabs are _____ that can be found at Cape Cod.
4. Wind and water are two of the natural elements that cause _____ on Cape Cod beaches.
5. Amelia tied her little _____ to the Winthrop's back deck with a bowline knot.
6. Marshes provide food, water, shelter and _____ for all kinds of wildlife.
7. The light from Christina's flashlight _____ the path as the children hurried back to the Winthrop's cottage.
8. Thousands of years from now, some scientists think the Atlantic Ocean will _____ all of Cape Cod.
9. Christina was _____ that someone would steal sand from the dunes and sell it.
10. Christina told Ranger Burnside that she had learned at school that snails, clams, oysters, and mussels were _____ .

The Mystery at Cape Cod



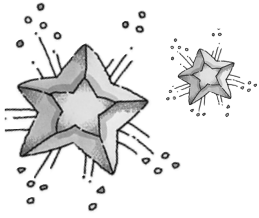
Matching Characters End-of-Unit Quiz

NAME: _____

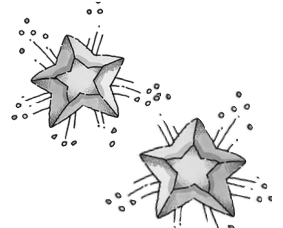
DATE: _____

Match the mystery characters with their descriptions.

- | | |
|-------------------------|---|
| _____ 1. Papa | A. Lived in a dune shack when she was younger |
| _____ 2. Mimi | B. Dressed up like a caped cod |
| _____ 3. Christina | C. Likes airplanes, ships, and lighthouses |
| _____ 4. Grant | D. Studies dune plants |
| _____ 5. Amelia | E. Showed Grant how to go clamming |
| _____ 6. Quincy | F. A park ranger at the Cape Cod National Seashore |
| _____ 7. Arabella | G. Gives tours of the lighthouse |
| _____ 8. Ben | H. Lost his job as a cod fisherman |
| _____ 9. Mrs. Winthrop | I. The daughter of an old friend of Mimi's |
| _____ 10. Anna Burnside | J. Figured out what ABC stood for on the sand bag label |



The Mystery at Cape Cod



Fill-in-the-Blank End-of-Unit Quiz

NAME: _____

DATE: _____

Fill in the blanks to complete the following:

1. Cape Cod was formed thousands and thousands of years ago by these.

G _____ C _____

2. This old wooden ship with billowing white sails is docked in Boston Harbor.

L _____ S _____

3. This is the oldest town on Cape Cod and one of the oldest in the United States.

A _____ H _____

4. Amelia and Quincy thought these were disappearing.

N _____ E _____

5. It protects miles of sandy shoreline and thousands of acres of dunes, marshes, and ponds on Cape Cod.

C _____ O _____ T _____ N _____
A _____ E _____

6. This red and white structure towers 48 feet above the cliffs at Nauset Beach.

U _____ G _____ U _____

7. This nickname was given to the three deactivated lighthouses that stand near Nauset Beach.

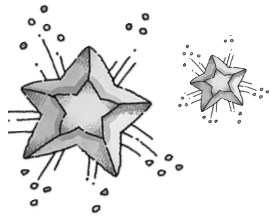
T _____ H _____ S _____ S _____

8. The kids hid from the shadowy figure in this place at the base of the spiral staircase.

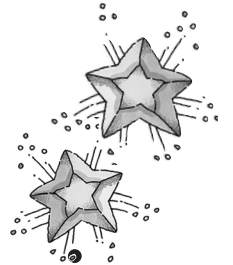
B _____ L _____

9. By the end of the nor'easter, this had fallen on the ground.

N _____



The Mystery at Cape Cod



True or False End-of-Unit Quiz

NAME: _____

DATE: _____

Write T for True and F for False.

1. ____ Nauset Lighthouse is the lighthouse on bags of Cape Cod potato chips.
2. ____ Cranberries grow on big bushes all over Cape Cod.
3. ____ The long, loud, low-pitched mysterious noise that a male whale makes is called the whale song.
4. ____ Another name for the *Mayflower* is *Old Ironsides*.
5. ____ Dunes on Cape Cod are about 10,000 feet tall.
6. ____ Strong, hurricane force winds blow from the southwest during a nor'easter.
7. ____ *Moby-Dick* is a book about a great, white whale.
8. ____ The main thing lighthouse keepers do today is make sure the oil light never goes out.
9. ____ Dune shacks never have electricity and running water.
10. ____ The Cape Cod coastline erodes at a rate of about three feet a year.

Answer Key

Page 15, Mathematics: Calculate It!

- 11 scallop shells, 3 whelks, 13 clams, 5 starfish; 2. 2,250; 3. \$400, \$1,600; 4. 65; 5. 15; 6. 57

Page 17, Vocabulary: Use It!

- illuminate; 2. habitat; 3. peninsula; 4. maneuver; 5. crustacean; 6. codfish; 7. erosion; 8. engrossed; 9. skiff; 10. mollusk

Page 22, Chapter Worksheet 1-4:

- cranberry bogs; 6. a nor'easter; 7. Old Ironsides; 8. Plymouth Rock; 9. T; 10. F

Page 23, Chapter Worksheet 5-8

- tire tracks; 6. go clamming (shelling); 7. a fiddler crab; 8. fox and rabbits; 9. F; 10. T

Page 24, Chapter Worksheet 9-11

- Amelia's plants for her plant study; 7. Truro; 8. money and moving; 9. T; 10. F

Page 25, Chapter Worksheet 12-15

- Keep Off the Dunes written in the sand; 6. the cliffs keep eroding; 7. seaweed and seawater; 8. three lighthouses that look alike; 9. F; 10. F

Page 26, Chapter Worksheet 16-19

- shoveling sand; 6. her mother's key; 7. a huge humpback whale; 8. back to the lighthouse; 9. F; 10. F

Page 27, Chapter Worksheet 20-23:

- seagulls and cranes; 4. a dune shack; 5. bags of sandbox sand; 6. #1 Burnside, #2 Gage, #3 ?; 7. ABC Sandbox Sand label; 8. F; 9. T; 10. T

Page 28, Vocabulary End-of-Unit Quiz:

- disobedient; 2. impermeable; 3. crustaceans; 4. erosion; 5. skiff; 6. habitat; 7. illuminated; 8. submerge; 9. incredulous; 10. mollusks

Page 29, Character Matching End-of-Unit Quiz:

- C; 2. A; 3. J; 4. B; 5. D; 6. E; 7. I; 8. H; 9. G; 10. F

Page 30, Fill-in-the-Blank End-of-Unit Quiz:

- glaciers; 2. Old Ironsides; 3. Sandwich; 4. sand dunes; 5. Cape Cod National Seashore; 6. Nauset Lighthouse; 7. the Three Sisters; 8. cubbyhole; 9. snow

Page 31, True or False End-of-Unit Quiz:

- T; 2. F; 3. T; 4. F; 5. F; 6. F; 7. T; 8. F; 9. T; 10. T