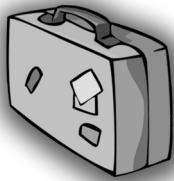




*The Mystery in the*  
**Smoky  
Mountains**



**Teacher's Guide**  
by  
**Carole Marsh**

Editorial Assistant: Paige Muh • Art & Design: Randolyn Friedlander

©2010 Carole Marsh/Gallopade International/Peachtree City, GA

Permission is hereby granted to the individual purchaser or classroom teacher to reproduce worksheets, quizzes, and activity pages (only) for individual or classroom use only.

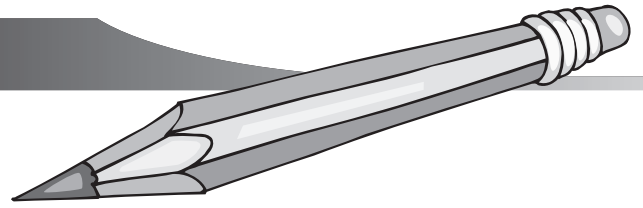
Reproduction of these materials for an entire school or school system is strictly prohibited.

No part of this book may be stored in a retrieval system, or transmitted in any form or by any means without written permission from the publisher.



GALLOPADE  
INTERNATIONAL



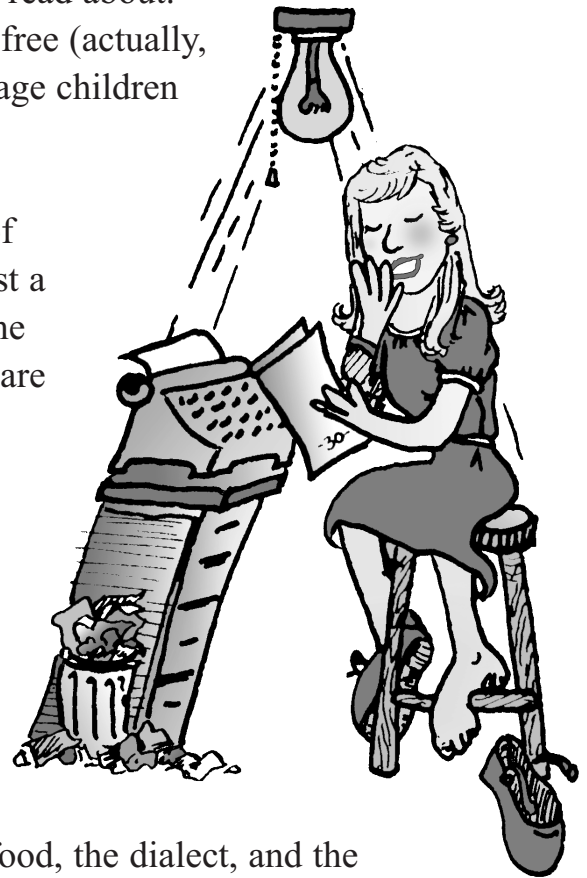


### **Dear Teacher,**

In 1979, I began writing children’s mysteries set at historic sites that still existed—primarily so that kids could go and see what they had read about. Frankly, I found no more fun, educational, and stress-free (actually, just plain joyful!) activity to do with my then school-age children than to visit a fascinating historic site!

The Smoky Mountains are a compelling quilt of history, folklore, geology and biodiversity—set against a backdrop of spectacular beauty of the Blue Ridge. The people who called this place home over the centuries are true survivalists who have cultivated lifestyles and traditions that are unique and distinct from the rest of America. No student can resist the cross-curricular counterpane of sights, sounds, smells, and tastes of these magical mountains.

The natural beauty of the Smoky Mountains, its waterfalls, coves, wildlife, and vistas, is rivaled only by the heritage of the people who have lived there. An experience with the music, the food, the dialect, and the history of the Appalachian people is as mesmerizing as any scenic overlook, wildlife encounter, or mountain peak!

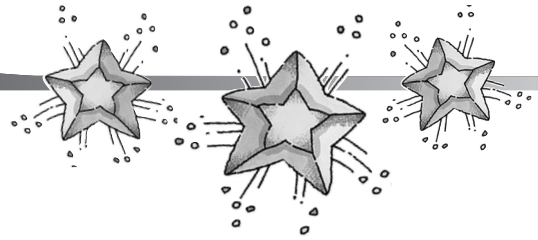


I love getting letters from teachers and parents who say they read the book with their class or child, then visited the historic site and saw all the places in the mystery for themselves. What’s so great about that? Everything! Reading and going and seeing and doing is what education is all about. And sometimes, a carefree vacation trip might be the spark that leads to a lifelong interest in an era, a place, or a people.

Enjoy your hike through the Great Smoky Mountains, through the eerie smoke and the magical mountain folklore!

*Carole Marsh*

# Table of Contents



<b>Page-by-Page Guide</b> .....	<b>4</b>
<b>Page-by-Page Guide</b> .....	<b>5</b>
<b>Page-by-Page Guide</b> .....	<b>6</b>
<b>Page-by-Page Guide</b> .....	<b>7</b>
<b>Page-by-Page Guide</b> .....	<b>8</b>
<b>Page-by-Page Guide</b> .....	<b>9</b>
<b>Page-by-Page Guide</b> .....	<b>10</b>
<b>Page-by-Page Guide</b> .....	<b>11</b>
<b>Page-by-Page Guide</b> .....	<b>12</b>
<b>Discussion Questions</b> .....	<b>13</b>
<b>Geography: Find It!</b> .....	<b>14</b>
<b>Mathematics: Calculate It!</b> .....	<b>15</b>
<b>English: Write It!</b> .....	<b>16</b>
<b>Vocabulary: Use It!</b> .....	<b>17</b>
<b>Art: Create It!</b> .....	<b>18</b>
<b>Science: Cook It!</b> .....	<b>19</b>
<b>All About Acrostics!</b> .....	<b>20</b>
<b>Word Search</b> .....	<b>21</b>
<b>Chapters 1-4 Worksheet</b> .....	<b>22</b>
<b>Chapters 5-8 Worksheet</b> .....	<b>23</b>
<b>Chapters 9-12 Worksheet</b> .....	<b>24</b>
<b>Chapters 13-16 Worksheet</b> .....	<b>25</b>
<b>Chapters 17-20 Worksheet</b> .....	<b>26</b>
<b>Chapters 21-24 Worksheet</b> .....	<b>27</b>
<b>Vocabulary End-of-Unit Quiz</b> .....	<b>28</b>
<b>Matching Characters End-of-Unit Quiz</b> .....	<b>29</b>
<b>Fill-in-the-Blank End-of-Unit Quiz</b> .....	<b>30</b>
<b>True or False End-of-Unit Quiz</b> .....	<b>31</b>
<b>Answer Key</b> .....	<b>32</b>

# Page-by-Page Guide

<i>Page #</i>	<i>Subject</i>	<i><u>EXPLORE!</u></i>
11	Body Language	Grant squirmed in discomfort because he needed to use the bathroom. Can you picture him in this description?
12	Culture	Mimi wants to research folklore, meaning the customs, traditions, and heritage of the people who live in a certain region. The cultural region in the Smoky Mountains is called Appalachia.
12	Geography	Asheville, NC is located in the heart of the Blue Ridge Mountains. It is home to the Biltmore Estate, built by George Vanderbilt in 1895.
13	Meteorology	The smoke Christina sees is actually fog that forms when warm, humid air moving up from the Gulf of Mexico is cooled rapidly by the higher elevations of the mountain range. The fog looks like plumes of smoke rising from the mountains.
13	Vocabulary	A hangar is a closed structure used to hold aircraft.
15	Body	Rising altitude causes the pressure on the outside of the ear to differ from the pressure inside the ear. This causes the ear to have a clogged sensation until the ear “pops,” or equalizes the pressure inside and out of the ear.
17	Body Language	Christina could tell Grant was thinking hard because his tongue was sticking outside his mouth. What are other types of body language that can symbolize thinking hard?
17	Maps	Grant pointed to triangles on a map that represented the mountains. Map symbols represent real objects and are usually included in a map legend. Name other common map symbols.
18	Fractions	A fraction is a number that can represent a part of a whole. The Smoky Mountains are a part or fraction of the Blue Ridge Mountains. The Blue Ridge Mountains are a part or fraction of the Appalachian Mountains.

## Page-by-Page Guide

- 19      Vocabulary      Anchovies are small, salty fish that are a common topping on a pizza. Many people don't like the taste of anchovies.
- 19      Fires      Grant mistakenly thinks the mountains are on fire. In fact, fires are an important part of the Smoky Mountains' ecosystem. Fire cuts back the overgrowth of trees, shrubs, and underbrush, allowing regrowth of young, healthy trees and plants.
- 21      School      Penland School for Crafts was started in 1920 by Lucy Morgan, who taught women how to make and sell handwoven goods. Why do you think that was an important trade to teach women at that time?
- 22      Glass      Glassblowers heat a mixture of silica, sodium bicarbonate, and lime until it forms a molten state. Using a pipe or tube, the glassblower blows into the molten glass to form it into a desired shape. The glass mixture hardens as it cools.
- 23      Jargon      Carter tells Grant, "You break, you buy!" The phrase is common in retail stores that can hold customers responsible for any damage done to merchandise on display in the store. Define the word jargon and think of other examples.
- 24      Crafts      Carter describes the process of making crafts as an art form. The techniques and traditions for making the crafts offered at Penland have been handed down for many years. Those traditions are as important as the crafts themselves.
- 24      Food      Barbeque in western NC is cooked with a sweet tomato-based sauce. Barbeque in eastern NC is cooked with a vinegar-based sauce. Discuss how different regions have variations of food.
- 24      Vocabulary      Gullet is another word for esophagus or throat.
- 27      Native Americans      Cherokee, NC, got its name from the Cherokee Indian tribe who inhabited the Smoky Mountain region for more than 11,000 years. The city is now a tourist destination with museums, shopping, hiking areas, and casinos.

## Page-by-Page Guide

- 27      Legend      A legend is a nonhistorical or unprovable story handed down by tradition from earlier times and accepted as true. The Cherokee Indians have many legends to tell the history of their tribe and the land they inhabited.
- 29      Plants      A thicket is a dense growth of shrubs, bushes, or small trees. It would not be easy for a human or larger animal to pass through a thicket of rhododendron bushes. Can you picture a thicket of bushes and shrubs surrounding a lake?
- 30      Vocabulary      To hoist means to raise or lift. Have you ever hoisted yourself into a tree?
- 31      Science      The tree branch was not large enough to hold the weight of both Grant and Elizabeth, causing it to break. The force of gravity gives objects weight and caused Grant and Elizabeth to fall to the ground.
- 35      Landmarks      The Blue Ridge Parkway is a 469-mile road that winds from Cherokee, NC, in the Great Smoky Mountains National Park north to Shenandoah National Park near Waynesboro, VA. The road travels through the Blue Ridge Mountain region and showcases some of the area's most beautiful scenery.
- 36      Music      A banjo is a 4, 5, or 6-stringed instrument that is commonly associated with bluegrass music. Bluegrass music is traditional to the Smoky Mountain region. Why do you think Papa turned on the radio to listen to banjo music?
- 39      Native Americans      The Cherokee are the Native American tribe that has lived in the southern Appalachian Mountains for centuries. They thrived in this region until the arrival of European settlers in the 1600s. After 200 years of harmonious coexistence, the settlers forced the Cherokee people from their land in the early 1800s.
- 40      History      Sequoyah was a Cherokee silversmith who created a Cherokee alphabet, making reading and writing in Cherokee possible. Why do you think that was so important to the Cherokee people?

## Page-by-Page Guide

- 41 History The Trail of Tears is the name of the forced relocation of the Cherokee people from their home in the Appalachian Mountains west to Oklahoma. In the winter of 1838, they were forced out on a 1,000-mile march west. Most had no supplies, food, or shoes, and thousands died from starvation, disease, and exposure to the weather.
- 42 Vocabulary Twine is a strong thread or string composed of two or more strands twisted together.
- 43 Fabric Leather is an article made of animal skin. Its surface is so soft that it can be scratched with something sharp. The words of the clue are scratched onto the leather.
- 44 Language The words of the clue are written in Cherokee. Do you know how to read or speak another language?
- 46 Vocabulary Mimi and Papa were flabbergasted when they heard Grant speaking Cherokee. That means they were surprised and amazed!
- 50 Fun and Games Mumble Peg is a game traditionally played in Appalachia. The players throw a pocketknife from certain positions into a circle drawn in the dirt. The object is for the knife to stick straight into the ground inside the circle when thrown from each position. The first player to miss loses. Does this seem like an unusual game to you? Why or why not?
- 51 Architecture Grant notices a small rectangular window near the chimney of the Walker's cabin. It is a "granny hole"—a window where the cabin's "granny" could sit in her rocking chair near the fire and keep her eye on things outside.
- 51 Fun and Games Lincoln Logs were invented by the son of famed architect Frank Lloyd Wright and named after Abraham Lincoln because he grew up in a log cabin.
- 52 Language Wilbur spoke in an Appalachian twang, meaning a characteristic speech of a particular region.

## Page-by-Page Guide

- 55      Architecture      An outhouse is a symbol of rural life in the days before indoor plumbing. Why were Grant and Christina unhappy about using an outhouse? Why would Peg and Wilbur still want to use one?
- 56      Vocabulary      Mimi is an optimist, meaning she always tries to see the good in every situation.
- 57      Symbol      The crescent moon over the door of an outhouse is said to represent the old symbol for womanhood—luna, or moon. It was the earliest “ladies room” sign! Over time, the moon cutout was carved simply to allow light inside the outhouse.
- 57      Animals      The Smoky Mountains are home to thousands of wildlife species. Raccoons are found at all elevations of the national park and are nocturnal, meaning they are active at night instead of during the day.
- 59      Environment      Recycling is the act of reusing a material again instead of throwing it away. Why is recycling good for the environment? What items do you recycle?
- 60      Food      In the Appalachian Mountains, cornpone is referred to as cornbread cooked and served in an iron skillet.
- 61      Architecture      A loft is an open upper story of a building, in this case, used as a bedroom.
- 62      Vocabulary      A counterpane quilt is a quilt used as a bedspread or top cover.
- 62      Vocabulary      Calico is a plain-woven cloth with a printed pattern on one side. Quilts are commonly made with calico cloth.
- 62      Feelings      Grant, Christina, and Elizabeth are jolted awake by loud noises. Have you ever been awakened by a startling sound? How did it make you feel?
- 64      Music      A man was playing a fiddle at Peg and Wilbur’s cabin. Fiddle music is traditional to the Smoky Mountain region.



## Page-by-Page Guide

- |    |            |  |
|----|------------|--|
| 65 | Dance      | “Do-si-do” is a term used in square dancing where dance partners lock arms and twirl around in a circle.   |
| 65 | Vocabulary | Grant received the fiddler’s bow as a souvenir, or an item to remember the occasion by.  |
| 66 | Vocabulary | A shivaree is traditionally a noisy, rambunctious serenade meant to surprise a newlywed couple on the night of their wedding. In this case, the Walkers and their neighbors surprised their visitors with a noisy serenade.  |
| 67 | Senses     | The smell of coffee tells Christina that Mimi and Papa are already awake. The sense of smell is well connected to memories. What smells remind you of something?   |
| 67 | Weather    | Frost is the layer of crystalline ice formed on objects when the air around the object can no longer hold moisture. The excess moisture freezes because the air temperature is at or below freezing. Frost usually forms on clear evenings in autumn when the air is very moist. |
| 73 | Landmarks  | Cades Cove is a valley in the Great Smoky Mountains National Park that was home to many settlers prior to the formation of the park. It is the most popular tourist destination in the park because of the preserved structures, beautiful scenery, and abundant wildlife.       |
| 74 | Wildlife   | Black bears are very active in the fall as they forage for food to prepare for their winter hibernation. Bears eat acorns, berries, grasses, insects, and small animals. Black bears are a symbol of the Great Smoky Mountains National Park.                                    |
| 76 | Landforms  | There are two types of bald mountains. Grassy balds are rounded mountaintops covered with native grasses. Heath balds are narrow ridges covered with dense shrubs, such as rhododendron. Scientists are still not certain why balds form.  |
| 79 | Landmarks  | Aside from log cabins, other structures preserved in Cades Cove are a blacksmith’s shop, cantilever barn, corncrib, sorghum mill, cable mill, and smokehouse.  |

## Page-by-Page Guide

- 81      Vocabulary      The churches on Cades Cove Loop Road were quaint, which means they were pleasingly old fashioned.
- 82      Wildlife      It is so common for tourists to see black bears in the Great Smoky Mountains National Park that the Park Service gives flyers to all visitors explaining what to do if they encounter the large animal! Tourists are strongly advised NOT to feed bears human food.
- 82      Senses      An animal's sense of smell is its strongest sense. A bear can smell food from hundreds of feet away.
- 83      Vocabulary      A marauder is someone who raids and plunders in search of treasure.
- 84      Irony      Earlier in the day, Mimi said they needed to be careful not to give their lunch to a bear. At Cades Cove, a bear ends up stealing their lunch!
- 87      Vocabulary      To make mincemeat of something is to destroy it as if cutting it into little pieces. The bear destroyed everything in the backseat of the car.
- 88      Careers      A national park ranger is someone who has been trained to educate visitors about a national park and help keep the park safe. Would you like to be a national park ranger?
- 89      Vocabulary      A rodeo has more than one meaning. It is a competition among cowboys in skills such as riding and lassoing. It is also a round-up of animals such as cattle, or in this case, skunks!
- 90      Wildlife      Animals all have a defense mechanism to protect them from predators. Skunks defend themselves by spraying a smelly mist on anything or anyone they are threatened by.
- 91      Vocabulary      A tranquilizer is a drug that causes a temporary state of unconsciousness or sleep.

## Page-by-Page Guide

- 96 Nature The Smoky Mountains are home to thousands of species of trees and plants. These plants and trees create the habitat for the hundreds of species of birds, mammals, and invertebrates of the mountains.
- 98 Machines A simple machine has no or few parts and needs only a single force to operate. From its description, do you think the contraption Grant found in the woods was a simple machine?
- 99 Vocabulary Moonshine is the common name for distilled alcohol made unlawfully. Moonshine is commonly associated with life in the Appalachian Mountains.
- 100 Weather Trees at higher mountain elevations are exposed to high winds. As trees grow, these winds will cause the tree to bend and curl.
- 105 Clothing Beekeepers wear a full protective suit and an unusual covered helmet called a veil. The suit and veil are usually white in color because bees can't see white as well as they can see darker colors.
- 107 Beekeeping Beekeeping is the maintenance of honey bee hives in order to collect honey and beeswax, and to help pollinate crops. An apiary is a place where bees are kept.
- 109 Medicine Early settlers in the Appalachian Mountains didn't have access to doctors or medicine like we do today. They made homemade, natural remedies for common ailments instead.
- 111 Tradition Quilting bees were an important event in the lives of women in the mountains. Though not as critical to their survival, women in this region still pass along the tradition of quilting to the next generation.
- 114 Tradition It was common for women to sew pockets into quilt fabric to form a hiding place for small, valuable objects.
- 118 Proper Name Grant was amused by the name of Boogerman's Trail. The proper name has a second meaning to Grant. Are there any proper names that have two meanings to you?

## Page-by-Page Guide

- |     |                  |  |
|-----|------------------|--|
| 119 | Feelings         | The sights and sounds of the mountains at night scared Christina. Has there ever been a time you were frightened when outdoors at night?   |
| 121 | Food             | S'mores are snacks made of chocolate and roasted marshmallows sandwiched between two graham crackers. The name is derived from people asking for "some more" of the delicious treat!               |
| 122 | Dialect          | Haint is a traditional Appalachian word for ghost.   |
| 127 | Landmark         | Clingman's Dome is the highest peak in the Great Smoky Mountains National Park. It is 6,643 feet above sea level!  |
| 129 | Vocabulary       | The kids had a theory about the location of the enchanted lake. A theory is a possible explanation.  |
| 130 | Animals          | Animal tracks on the ground can identify what types of animals are in the area. They are their own clues!  |
| 133 | Rising<br>Action | Just as the kids believe they are about to find the enchanted lake, Carter, Mimi, and Papa interrupt them. Are you surprised that they do not find the lake? Do you think the bear found the lake? |

## Discussion Questions

1. Define the word folklore. Discuss why Mimi loves the folklore of the Smoky Mountains. Describe some of the Appalachian customs and traditions Grant and Christina experienced on their visit. Research other legends or customs from this area and share them with the class.
2. How would the Smoky Mountains look different if Grant and Christina visited during summer instead of fall? How would it be different in winter or spring? Why is fall such a popular time of year to visit the mountains?
3. Carter explains that the process of making crafts at Penland School is an art form. Why does he say that? Why is it important that the techniques and traditions of making those crafts have been handed down over many years?
4. Why was it so painful for the Cherokee Indians to be forced from their land by the settlers in the early 1800s? What does the name “Trail of Tears” mean? Discuss what it would have been like to walk along the Trail of Tears.
5. Discuss what life would have been like in Cades Cove in the 1700s and 1800s. Consider the one-room log cabins that would hold 10 to 15 members of a family; no running water or electricity; farm work; and relations with Native Americans. Would you like to have lived in Cades Cove in that time? Why or why not?
6. What would be your favorite part of visiting the Great Smoky Mountain National Park? Hiking? The wildlife? Waterfalls? Scenic overlooks? Driving the Blue Ridge Parkway? Other things? What do you think Christina’s and Grant’s favorite parts were? Explain your answer.

### **Bonus Info!**

#### **Biodiversity in the Smoky Mountains!**

Biodiversity, or the variety of plant and animal species, is a distinguishing feature of the Great Smoky Mountains National Park. There is no other place of its size or climate that contains as many varieties of plants and animals. Scientists have documented more than 10,000 species of plant and animal life in the park, but believe there could be up to 90,000 more species at home there!

Why do so many plants and animals thrive here? The park’s climate and differing elevations are probably the reason. Some plants and animals are at home in the lower elevations—valleys and ridges—where warmer temperatures and lush landscapes prevail. Other plants and animals inhabit the higher elevations, preferring the colder temperatures and harsher terrain.

Because of the variety of plant and animal species in the park, the Great Smoky Mountains National Park has been designated an International Biosphere Reserve by the United Nations.

# Geography: Find It!

1. Find the Great Smoky Mountains National Park on a national parks map. How big is this park compared to other national parks? What other national park is near the Great Smoky Mountains National Park?
2. Find the Smoky Mountains on a map of the United States. Find your hometown on the same map. How far away is your hometown from the Smoky Mountains? Could you drive there in one day? Would you need to fly to Asheville, NC, like Christina and Grant?
3. The Smoky Mountains are located in which states? The Appalachian Mountains are located in which states?
4. Draw your own map of the Smoky Mountains. Include the places Christina and Grant visited on their trip: Asheville, NC; Cherokee, NC; Penland School for Crafts; Cades Cove; Laurel Falls; Clingman's Dome; Mount LeConte; and the Blue Ridge Parkway. You can also include places you wished they visited, like Boogerman's Trail!
5. Use a set of Lincoln Logs or popsicle sticks to build a log cabin. Make it as large or as small as you wish. Use rocks or other materials to make a chimney, and don't forget to build an outhouse!

## **Bonus Info!**

### **Also in the Great Smoky Mountains:**

Biltmore House and Estate  
Gatlinburg Sky Lift  
Great Smoky Mountain Railroad  
Appalachian Trail  
Oconaluftee Visitors Center  
Newfound Gap  
Balsam Mountain  
Dollywood Smoky Mountain Amusement Park  
Linn Cove Viaduct  
John C. Campbell Folk School  
Cataloochee  
Mingo Falls  
Fontana Dam  
Andrews Bald  
Alum Cave Bluffs  
Grandfather Mountain  
Gatlinburg Trail  
Chimney Tops Overlook  
Nantahala National Forest  
Tuckaleechee Caverns

# Mathematics: Calculate It!

1. If Grant found 3 clues, Christina found 4 clues, and Elizabeth found 6 clues, how many clues would they have to solve their mystery? If Carter took away 3 of the total number of clues, how many would they have left?
2. Christina and Grant bicycled 4 miles an hour through Cades Cove. They take two 9-minute rest breaks to allow deer to cross the road in front of them. How many total minutes will it take them to bicycle around the entire 11-mile Loop Road?
3. Grant, Christina, and Elizabeth can round up 3 skunks every 8 minutes. One skunk escapes every 24 minutes. How many skunks will they have at the end of 48 minutes?
4. While in the Smoky Mountains, Grant sees 3 bears, 9 deer, 4 raccoons, 6 tree frogs, 1 river otter, and 7 skunks. Create a bar graph of the wildlife Grant sees in the Smoky Mountains.
5. To calculate square footage, multiply length times width. If a log cabin is 14 feet long and 16 feet wide, what is its square footage?
6. Ida has 3 bee hives. The hives each contain 1,250 worker bees and 1 queen bee. How many bees does Ida have in all three hives?
7. How many of Peg and Wilbur's mountain neighbors participate in the shivaree? There are 6 people with masks, 4 people with bells, 7 people with pots and pans, 1 fiddle player, and 3 dancers.

## **Bonus Info!**

### **The Great Smoky Mountains National Park...By the Numbers**

The park is 520,000 acres.

Clingman's Dome is 6,643 feet tall and receives about 85 inches of rainfall each year!

The park draws 8-10 million visitors annually!

The Blue Ridge Parkway is 469 miles long!

The park contains over 800 miles of hiking trails!

The Appalachian Trail runs for 70 miles within the park!

In the fall, black bears gain 3-5 pounds a day to prepare for hibernation!

The park is home to 240 species of birds!

There are more than 2,000 miles of flowing streams inside the park!

The oldest tree in the park is a 564-year old blackgum tree!

## ***English: Write It!***

1. Write a short story about what would have happened if Christina, Grant, and Elizabeth had found the enchanted lake.
2. Create a menu of a traditional Appalachian meal. Include descriptions of the dishes and a price for each. Go one step further and put your menu on colored paper and illustrate it.
3. Compose a poem about an outhouse!
4. Pretend you are a news reporter and write a news story about the Skunk Rodeo Christina, Grant, and Elizabeth participated in. Be sure to include quotes from the kids and the park ranger!
5. Describe an experience that Christina or Grant had with each of their five senses: seeing, hearing, tasting, touching, and smelling.
6. Think about Peg and Wilbur Walker's opinion of people from the city. Write a description of Christina and Grant from their point of view. Use some of their local dialect.
7. Make up a story like the legend of the enchanted lake. Write it down and share it with your classmates.

### **Bonus Info!**

#### **Music and Dance!**

Appalachian music is one of the best known parts of Appalachian culture. The music has roots in Scottish and Irish songs and music, which European settlers brought to the area in the 17th century. Traditional instruments used in Appalachian music are stringed instruments such as the fiddle, banjo, guitar, and bass. Appalachian music tends to tell a story of the experiences of the people who call the mountains home.

Clogging blends the dances of European settlers with those of the Cherokee Indians. It was the social dance of the Appalachian Mountains as early as the 1700s. Dancers strike their feet on the floor in unison, creating a rhythm to blend with the music. Tap shoes or wooden shoes increase the emphasis of this lively dance!



# Vocabulary: Use It!

Use the clues to unscramble the words taken from the mystery book. Use these words and their definitions to increase your vocabulary!

1. Native American tribe from Smoky Mountain region  
ECEHEKRO    E
2. The customs and traditions of the people in a particular region  
LEROKFOL    K    R
3. Products made by hand  
FTSARC    C
4. The beginning of a hiking trail  
RIALTEDAH    R    E
5. Water that travels over the side of a rock or cliff  
LLFAWAERT    R    L
6. Scientific word for a beekeeper  
TAPSRIAI    P    R
7. A story passed down through time that is believed to be true but can't be proven  
GEDLEN    G
8. A variety of species of plants and animals  
DIERVSTIYOIB  
O    E
9. Medicine or treatment  
EYEDMR    D
10. A loud, surprise serenade  
EREAVSHI    S    V

## Bonus Info!

### Haints and You'uns?

A person's dialect, or the way in which someone uses vocabulary or grammar, can distinguish which region of a country someone is from. The dialect of the Appalachian region is one of the most recognizable in the United States and has long been misidentified as inferior. It was influenced by Irish and Scottish settlers who were some of the first Europeans in the area. Below are some Appalachian words and their meanings.

hunker: squat down, bend over

hippens: diapers

far dogs: metal holders for wood in a fireplace

fisticuff: fist fight

go devil: split wood

gander: look or stare

dodger: piece of baked bread

druthers: rather, choice

jasper: bad or dishonest person

infare: a wedding celebration

garden sass: lettuce or greens

### **Make a Paper Quilt!**

A quilt is a collection of colorful and patterned fabric stitched together. You can easily make a beautiful paper quilt with colorful, patterned paper. Here are four options for creating a paper quilt. Use at least 14-18 squares for your quilt.

1. Collect multiple pieces of colored paper, giftwrap, tissue, wallpaper scraps, or scrapbook paper. Cut all pieces into equal squares. The size of your squares will determine the size of your “quilt.” Arrange the squares into columns and rows in a desired pattern. Attach the squares together on the back with tape or glue.
2. Illustrate pictures or color patterns on equal squares of paper. When the pictures are complete, arrange the squares into columns and rows in a desired pattern. Attach the squares together on the back with tape or glue.
3. Classroom Quilt! Give each student in class an equal-size square of paper to illustrate as he/she wishes. When all squares are complete, arrange the squares into columns and rows in a desired pattern. Attach the squares together on the back with tape or glue to make a quilt that represents the entire class.
4. Life Story Quilt! On the paper squares, illustrate something about you. Ideas for each square include: a self portrait or drawing of your family, favorite animal, favorite book, best friend, hobbies, favorite food, etc. When all squares are complete, arrange the squares into columns and rows in a desired pattern. Attach the squares together on the back with tape or glue to make a quilt that tells all about you!

### **Bonus Info!**

#### **A Cherokee Legend: How the Red Bird Got His Color**

After chasing a raccoon across a riverbank, a wolf's eyes became caked with mud. He begged and begged any passing animal for help. After a long while, a small brown bird offered to help the wolf and used his beak to peck the mud away from his eyes. As a reward, the wolf offered to take the bird to a rock that oozed red paint and paint his feathers red.

When they came to the rock, the wolf grabbed a twig from a tree and chewed on it until it was as soft as a paintbrush. He dipped it into the red paint and began to paint the bird's feathers red. When the wolf was done, the bird flew off to show his family and friends how beautiful he was. This is why you can see red birds flying around the woods in Cherokee land!

## Science: Cook It!

In a time with no television or video games, taffy pulls were a favorite pastime for kids in the Smoky Mountains! It was fun and the taffy was a delicious treat!

Here's a recipe for making the candy. Have students pair off and pull, pull, PULL so that tiny bubbles of air distribute throughout the candy, making it light and chewy! **WARNING!** Pulling can take up to 15 minutes.

### An Old Fashioned Taffy Pull!

#### Ingredients:

2 cups dark molasses  
1 cup sugar  
2 teaspoons vinegar  
1/4 teaspoon baking soda  
butter

Cook molasses, sugar, and vinegar to hard boil stage. Remove from heat; add baking soda and stir vigorously. Pour out on well-buttered jelly roll pan or cookie sheet. **CAUTION!** Cool slightly until able to handle to prevent burns on hands and fingers.

Have students cover their hands liberally with butter. Divide students into pairs. Tell them to take a piece of the candy mixture and start pulling. As the taffy is pulled, it will get bigger and bigger and lighter and lighter until a "rope" of taffy appears. When the candy is too cool to pull easily, snip the "ropes" into pieces and wrap individually in wax paper.

### Bonus Info!

#### Appalachian Cornpone

Cornpone is extremely popular in the southern United States—including the Smoky Mountains! Cornpone is an eggless cornbread that can be cooked directly in a cast iron skillet!

#### Ingredients

2 cups white cornmeal  
1 teaspoon salt  
1-½ cups cold water (or enough to make a soft mixture)  
4 tablespoons vegetable oil

Preheat oven to 475 degrees. Mix cornmeal, salt, and water. Heat oil in a 9-inch round iron skillet in the oven until hot.

Carefully spread mixture evenly in hot skillet and spoon some of the fat that comes to the edges up on top of the batter. Place the skillet in the oven and bake for about 15 minutes or until golden brown.

Optional: Broil for the last 2 to 3 minutes to make it extra golden brown and crispy around the edges.

# Activities

## All About Acrostics!

1. Find a fact in the book that begins with each of the letters below to spell SMOKY MOUNTAINS. For example, for S, you could write “A statue of Sequoyah is located in Cherokee, NC.” Write your facts below next to the correct letter.
2. Next, explore the website [www.nps.gov/grsm/index.htm](http://www.nps.gov/grsm/index.htm). Find facts on the website to spell SMOKY MOUNTAINS. Create this acrostic using another piece of paper. Circle the fact that surprised you the most and share it with your class!

S

M

O

K

Y

M

O

U

N

T

A

I

N

S

# Activities

*Search for the mysteriously hidden words below!*

V	C	E	X	Y	A	R	E	H	E	M	L	O	C	K
N	R	L	B	S	Y	H	S	Q	U	I	L	T	A	A
C	A	D	D	A	M	O	U	J	D	H	Q	U	D	C
O	F	D	S	L	O	D	O	U	Q	Z	T	A	H	E
J	T	I	D	D	U	O	H	O	Q	U	E	E	E	A
L	S	F	S	E	N	D	T	H	M	H	R	R	P	A
L	B	F	M	U	T	E	U	N	L	O	A	P	X	R
A	E	K	O	F	A	N	O	I	K	V	A	V	E	Z
F	Z	G	K	D	I	D	A	E	I	L	E	L	X	R
R	Z	C	E	X	N	R	E	H	A	P	L	Z	H	C
E	C	N	V	N	T	O	S	C	C	O	C	C	J	V
T	X	R	B	V	D	N	H	V	H	N	O	T	V	W
A	T	S	I	R	A	I	P	A	M	A	E	K	L	E
W	C	B	Z	A	A	E	G	D	I	R	E	U	L	B
J	Z	E	U	N	B	L	A	C	K	B	E	A	R	C

## WORD BANK

APIARIST	CHEROKEE	HOLLER	RHODODENDRON
APPALACHIAN	CRAFTS	LEGEND	SHIVAREE
AUTUMN	ENCHANTED	MOUNTAIN	SMOKE
BLACK BEAR	FIDDLE	OUTHOUSE	TRAILHEAD
BLUE RIDGE	HEMLOCK	QUILT	WATERFALL

# Chapters 1-4 Worksheet

NAME: \_\_\_\_\_

DATE: \_\_\_\_\_

*Do you know what these words mean? Write their definitions in the space provided.*

1. plume
2. canopy
3. folklore
4. enchanted

*Answer the following questions using complete sentences.*

5. In what season of the year are Christina and Grant visiting the Smoky Mountains?
6. What unusual feature does Christina see rising out of the mountains?
7. Mimi and Papa's friend Carter teaches what type of classes at Penland School?
8. The legend Carter tells the kids is handed down from what Native American tribe?

*Write T for True and F for False.*

9. \_\_\_\_\_ Penland School for Crafts is a school for children.
10. \_\_\_\_\_ Legends are stories handed down that can't be proven true or false.

# Chapters 5-8 Worksheet

NAME: \_\_\_\_\_

DATE: \_\_\_\_\_

*Do you know what these words mean? Write their definitions in the space provided.*

1. dilapidated
2. fibrous
3. gateway

*Answer the following questions using complete sentences.*

4. How did Christina and Grant first meet Elizabeth?
5. Which scenic road did Papa take from Penland to Cherokee?
6. Where was Grant when he found the first clue?
7. What did the tears on Sequoyah's face represent?
8. What words does Grant learn to say in Cherokee that he already knows in other languages?

*Write T for True and F for False.*

9. \_\_\_\_ The Cherokee people have lived peacefully in the town of Cherokee for centuries.
10. \_\_\_\_ Mimi and Papa were not surprised that Grant could speak Cherokee fluently.

# Chapters 9-12 Worksheet

NAME: \_\_\_\_\_

DATE: \_\_\_\_\_

*Do you know what these words mean? Write their definitions in the space provided.*

1. optimist
2. delectable
3. calico
4. precarious

*Answer the following questions using complete sentences.*

5. What is the name of the old-timey game kids played with pocketknives?
6. List the two things that Grant is surprised the Walkers don't have in their house.
7. What kind of instrument is played during the shivaree?

*Write T for True and F for False.*

8. \_\_\_\_ The Walkers live at the top of a mountain.
9. \_\_\_\_ Grant recites a chant about cornpone during dinner.
10. \_\_\_\_ The kids help plan the shivaree that takes place in the Walker's cabin.



# Chapters 13-16 Worksheet

NAME: \_\_\_\_\_

DATE: \_\_\_\_\_

*Do you know what these words mean? Write their definitions in the space provided.*

1. etched
2. weathered
3. marauder

*Answer the following questions using complete sentences.*

4. Where did Christina and Elizabeth find the next clue?
5. What popular Smoky Mountain tourist destination do Mimi, Papa, and the kids visit in the morning?
6. Why does the bear approach Papa's rental car?
7. Who asks the kids to help round up skunk near the Abrams Falls trailhead?

*Write T for True and F for False.*

8. \_\_\_\_ Scientists are not completely sure why bald mountains form.
9. \_\_\_\_ Cades Cove is a modern farm community.
10. \_\_\_\_ Skunks are removed from Cades Cove because there are too many of them in the area.

# Chapters 17-20 Worksheet

NAME: \_\_\_\_\_

DATE: \_\_\_\_\_

*Do you know what these words mean? Write their definitions in the space provided.*

1. biodiversity
2. honeycomb
3. remedies
4. quiver

*Answer the following questions using complete sentences.*

5. What does Grant find in the trees near the trail to Laurel Falls?
6. What is Ida wearing that Grant thinks makes her look like a spaceman?
7. What was it about Peg's mountain remedy that Grant didn't like?
8. In what unusual place does Christina find the last clue?

*Write T for True and F for False.*

9. \_\_\_\_ Mimi and Papa took Grant hiking on Boogerman's Trail.
10. \_\_\_\_ Wilbur tells a ghost story about a newlywed couple from Civil War times.

# Chapters 21-23 Worksheet

NAME: \_\_\_\_\_

DATE: \_\_\_\_\_

*Do you know what these words mean? Write their definitions in the space provided.*

1. abruptly
2. jamboree
3. trek

*Answer the following questions using complete sentences.*

4. What event did Mimi, Papa, and Carter take the kids to see at the observation tower?
5. What is the name of the highest peak in the Great Smoky Mountains National Park?
6. How did Mimi and Papa get to the top of Mount LeConte?
7. Name three animals the kids thought were leading them to the enchanted lake.

*Write T for True and F for False.*

8. \_\_\_\_ The kids never discovered the enchanted lake.
9. \_\_\_\_ Carter admitted that he left the clues for the Christina, Grant, and Elizabeth.
10. \_\_\_\_ The LeConte Lodge is only accessible on foot.



# *The Mystery in the Smoky Mountains*



## *Vocabulary End-of-Unit Quiz*

NAME: \_\_\_\_\_

DATE: \_\_\_\_\_

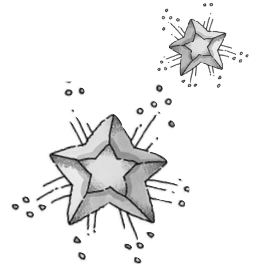
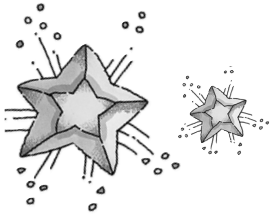
*Using the word bank, fill in the correct vocabulary word in the sentences below.*

### WORD BANK

PLUME	ENCHANTED	DILAPIDATED	GATEWAY	COUNTERPANE
DELECTABLE	MARAUDER	BIODIVERSITY	REMEDY	TREK

1. The slice of cornpone covered in butter was so \_\_\_\_\_, Grant quickly ate two more pieces!
2. The Cherokee Indians believed there was an \_\_\_\_\_ lake that could magically heal wounded animals and strengthen them for the harsh winter.
3. An outstanding feature of the Smoky Mountains is its \_\_\_\_\_, as it contains thousands and thousands of species of plants and animals.
4. To begin a trip along the Blue Ridge Parkway, tourists can start at its \_\_\_\_\_ in Cherokee, North Carolina.
5. When Christina noticed that the picnic basket had been emptied and destroyed, she wondered if the \_\_\_\_\_ was the black bear who was walking away from the car.
6. The \_\_\_\_\_ up Mount LeConte was so long and steep, Christina and Grant had to stop to rest several times.
7. Christina was mesmerized by the \_\_\_\_\_ of smoke rising from the mountains and floating into the air.
8. When Grant was stung by a bee, Peg created an unusual \_\_\_\_\_ to make him feel better.
9. The different colors of the \_\_\_\_\_ quilt made the bed look warm and cozy!
10. The \_\_\_\_\_ barn sitting on the mountainside had been there for years and years.

# *The Mystery in the Smoky Mountains Matching Characters End-of-Unit Quiz*

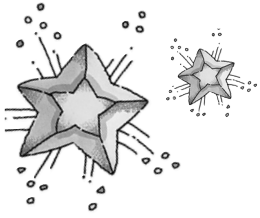


NAME: \_\_\_\_\_

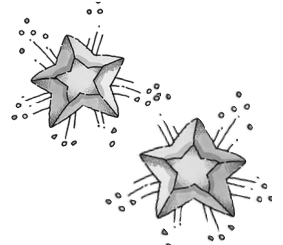
DATE: \_\_\_\_\_

*Match the mystery characters with their descriptions.*

- |                         |  |
|-------------------------|--|
| _____ 1. Papa           | A. Taught glassblowing at Penland School                 |
| _____ 2. Mimi           | B. Thought the smoke rising from the mountain was spooky |
| _____ 3. Grant          | C. Organized the skunk rodeo                             |
| _____ 4. Christina      | D. Loved to visit the mountains in the fall              |
| _____ 5. Elizabeth      | E. Beekeeper   |
| _____ 6. Carter         | F. Mystery book writer                                   |
| _____ 7. Ranger Daniels | G. Stung on the nose by a bee                            |
| _____ 8. Ida            | H. Loved the wildlife in the Smoky Mountains             |



# *The Mystery in the Smoky Mountains*



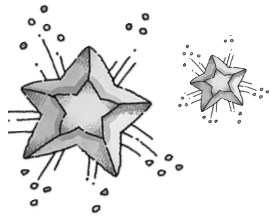
## *Fill-in-the-Blank End-of-Unit Quiz*

NAME: \_\_\_\_\_

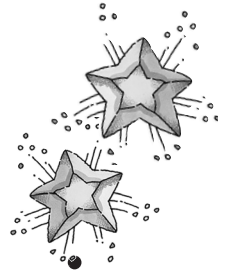
DATE: \_\_\_\_\_

*Fill in the blanks to complete the following:*

1. The Smoky Mountains is home to thousands of species of plants and animals.  
\_\_\_\_\_ O \_\_\_\_\_ S \_\_\_\_\_
2. The route taken by the Cherokee Indians after they were forced to leave their land.  
T \_\_\_\_\_ R \_\_\_\_\_
3. Instead of a bathroom, the Walkers use this structure behind their cabin.  
\_\_\_\_\_ U \_\_\_\_\_ H \_\_\_\_\_
4. This farm community is one of the Smoky Mountains most popular tourist destinations.  
\_\_\_\_\_ D \_\_\_\_\_ V \_\_\_\_\_
5. Cherokee legend says the enchanted lake is near a thicket of this plant.  
\_\_\_\_\_ H \_\_\_\_\_ E \_\_\_\_\_
6. This scenic road runs through the Appalachian Mountains from Cherokee, North Carolina, to Virginia.  
\_\_\_\_\_ U \_\_\_\_\_ I \_\_\_\_\_ K \_\_\_\_\_
7. These types of mountains have no trees on top of them.  
\_\_\_\_\_ L \_\_\_\_\_ N \_\_\_\_\_
8. Women in the Smoky Mountains liked to socialize, teach, and sew at this event.  
\_\_\_\_\_ U \_\_\_\_\_ B \_\_\_\_\_
9. This is Mimi's favorite thing to learn about in the Smoky Mountains.  
\_\_\_\_\_ F \_\_\_\_\_ O \_\_\_\_\_
10. This is an old-timey Appalachian word for ghost.  
\_\_\_\_\_ N \_\_\_\_\_



# *The Mystery in the Smoky Mountains*



## *True or False End-of-Unit Quiz*

NAME: \_\_\_\_\_

DATE: \_\_\_\_\_

*Write T for True and F for False.*

1. \_\_\_\_ The airplane ride from Peachtree City to Asheville took a short amount of time.
2. \_\_\_\_ Papa told Christina and Grant about a legend of an enchanted lake.
3. \_\_\_\_ The Appalachian Mountains are a section of the Smoky Mountains.
4. \_\_\_\_ Christina thought the smoke rising from the mountains looked funny!
5. \_\_\_\_ While visiting the Walkers, the kids were frightened by a loud commotion.
6. \_\_\_\_ Sequoyah invented the Cherokee alphabet, making reading and writing the Cherokee language possible.
7. \_\_\_\_ The kids learned that moonshine was made in secret.
8. \_\_\_\_ Grant and Christina wore coveralls and a hood to help Ida with her bees.
9. \_\_\_\_ Christina, Grant, and Elizabeth swam with animals in the enchanted lake.
10. \_\_\_\_ The only way up to the LeConte Lodge is by helicopter.

# Answer Key

## *Page 15, Mathematics: Calculate It!*

1. 13 clues; 10 clues; 2. 183 minutes;  
3. 16 skunks; 5. 224 square feet; 6. 3,753  
bees; 7. 21 people

## *Page 17, Vocabulary: Use It!*

1. Cherokee; 2. folklore; 3. crafts;  
4. trailhead; 5. waterfall; 6. apiarist;  
7. legend; 8. biodiversity; 9. remedy;  
10. shivaree

## *Page 22, Chapter Worksheet 1-4:*

5. autumn; 6. smoke; 7. glassblowing;  
8. Cherokee; 9. F; 10. T

## *Page 23, Chapter Worksheet 5-8:*

4. she and Grant fell out of a tree; 5. Blue  
Ridge Parkway; 6. outside of the bathroom in  
the Craft House at Penland School; 7. Trail of  
Tears; 8. All you can eat!; 9. T; 10. F

## *Page 24, Chapter Worksheet 9-12*

5. mumble peg; 6. television and bathroom;  
7. fiddle; 8. F; 9. T; 10. F

## *Page 25, Chapter Worksheet 13-16:*

4. on top of frosted pumpkins; 5. Cades  
Cove; 6. it smells their lunch; 7. Ranger  
Daniels; 8. T; 9. F; 10. T

## *Page 26, Chapter Worksheet 17-20:*

5. moonshine still; 6. beekeeping coveralls  
and helmet; 7. it smelled bad; 8. inside a  
quilt pocket; 9. F; 10. T

## *Page 27, Chapter Worksheet 21-23:*

4. sunrise; 5. Clingman's Dome; 6. bear,  
raccoon, hawk; 7. walked with the llamas;  
8. T; 9. F; 10. T

## *Page 28, Vocabulary End-of-Unit Quiz*

1. delectable; 2. enchanted; 3. biodiversity;  
4. gateway; 5. marauder; 6. trek, 7. plume,  
8. remedy; 9. counterpane; 10. dilapidated

## *Page 29, Matching Characters End-of-Unit Quiz*

1. D; 2. F; 3. G; 4. B; 5. H; 6. A; 7. C;  
8. E

## *Page 30, Fill-in-the-Blank End-of-Unit Quiz*

1. biodiversity; 2. Trail of Tears; 3. outhouse;  
4. Cades Cove; 5. rhododendron; 6. Blue  
Ridge Parkway; 7. bald mountains,  
8. quilting bee; 9. folklore; 10. haint

## *Page 31, True/False End-of-Unit Quiz*

1. T; 2. F; 3. F; 4. F; 5. T; 6. T; 7. T; 8. T;  
9. F; 10. F